



TAKE A SMART APPROACH
TO EDUCATION WITH
DELTAVIEW SMART INTERACTIVE PANEL



International
Electrotechnical
Commission



GeM
Government
e Marketplace

www.deltaview.in

About us



SMARTER CLASSROOMS

Create a Brighter & Vibrant Learning Environment for Students & Teachers!

DeltaView interactive Panel is an ultimate solution designed to facilitate interactive learning. It offers multiple options to the teachers for enhancing the pedagogical outcomes which are directly correlated to the overall development of students. A solution that offers rugged performance in the classroom environment & easy to operate with the collaborative tools.

Product Specification

 **IPS Display**

 **Anti-glare coating to absorb up to 80% of light**

 **Inbuilt Camera/Mic**

 **Split Screen**

 **Pinch Zoom**



 **Windows Support (OPT)**

 **4K UHD**

 **Screen recording**

 **Powerful channel 2.1 sound 40w with sub-woofer**

 **NFC Reader**



Canvas giving sharp, natural writing experience



Anti-glare coating to absorb up to 80% of light



Easy Wireless connectivity with laptops and mobile devices



Open platform, compatible with all e-learning contents



Toughened glass protection 8 MOHS



In-built Wi-Fi 5, Ethernet & Bluetooth 5.1



Energy saving design, Max 300W, consumes <0.5W on standby



Wide viewing angle up-to 178 degree

Product Feature's

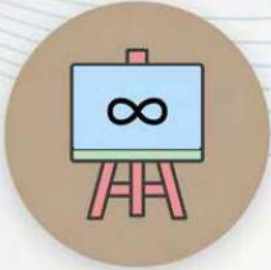
MULTI FINGURE GESTURE CONTROL

Draw, select, drag, rotate, and erase by using the 40 multi-point touch gesture control like palm erase, double click to change pen colour, long press, multi-finger swipe etc.



ENDLESS CANVAS / AUTO SCROLL

Write endlessly on the smart board without erasing. New pages are automatically created and old pages can be referred anytime during the session.



TEXT/SHAPE RECOGNITION

Recognizes the text or shape written or drawn on the canvas automatically and converts it into the most accurate and readable format.



SCREEN RECORDING

Teachers can record, save, replay, and share the entire lesson conducted on the smart digital screen with the audio and video files.



INTELLIGENT SEARCH

The panel automatically gives the access to online sources (like Google, Wikipedia, Youtube, PubMed) for the topic written and highlighted on the screen. And also share necessary information about topic direct on the canvas.



IMAGE INSERTION / PDF

Image insertaion it helps to insert a image through QR code from mobile to whiteboard.





BLAZE Specifications

MODEL NO.	DV75B13	DV86B13
LED PARAMETERS	75"	86"
DISPLAY		
BACK LIGHT	D-LED	D-LED
ACTIVE DISPLAY AREA	1649.74 (H) X 927.94 (W)	1895.04 (H) X 1065.96 (W)
PANEL TYPE	IPS	IPS
RESOLUTION	3840 × 2160 (4K, RGB)	3840 × 2160 (4K, RGB)
CONTRAST RATIO	1200:1	1200:1
BRIGHTNESS	450 CD/M2	450 CD/M2
DISPLAY COLORS	1.07B (10 BIT)	1.07B (10 BIT)
ASPECT RATIO	16:9	16:9
RESPONSE TIME	2-5ms	2-5ms
VIEWING ANGLE	178°(H) / 178°(W)	178°(H) / 178°(W)
LED LIFE TIME	60,000 HRS	60,000 HRS
BONDING TECHNOLOGY	ZERO BONDING	ZERO BONDING
SCREEN PROTECTOR	3MM TEMPERED AG GLASS/8 MOHS	3MM TEMPERED AG GLASS/8 MOHS
SPEAKER		
SOUND OUTPUT-SPEAKER	20x2W+15W SUBWOOFERS	
CAMERA & MIC		
PIXEL	48 - Mega Pixel	
MICROPHONE	8 ARRAY MIC	
POWER PARAMETERS		
POWER (NO PC)	≤350 W	≤450 W
WORKING VOLTAGE	100V~240V AC	100V~240V AC
STANDBY POWER	< 0.5W	< 0.5W
ANDROID OS		
ANDROID SYSTEM	ANDROID 13	
MOTHERBOARD	A311D2	
RAM & ROM	DDR4 8GB & EMMC 128GB	
CPU / GPU	OCTACORE, Cortex A73 + A53 , G52MP8	
WIFI	WIFI 5, 802.11AC/B/G/N/A/AX (2.4GHZ + 5GHZ) : WITH HOTSPOT 5GHZ	
BLUETOOTH	BLUETOOTH 5.1	
ETHERNET NETWORK	10M / 100M / 1000M (DEFAULT)	
INPUT & OUTPUT		
BACK INTERFACE INPUT & OUTPUT	USB 3.0*2, TOUCH USB*1, TYPE C*1, HDMI IN*2, USB 2.0*1, AUDIO IN *1, DP IN*1, VGA*1, Rj45 IN*1, Rj45 OUT*1, HDMI OUT*1	
FRONT CONNECTION	USB 3.0*2, HDMI IN*1 : TOUCH USB*1 : TYPE C*1	
TOUCH PARAMETERS		
TOUCH TECHNOLOGY	INFRARED TECHNOLOGY (IR)	
TOUCH POINTS	WINDOWS & ANDROID SYSTEM : 40 TOUCH POINTS	
INDUCTIVE OBJECTS	FINGER OR PEN	
ACURACY	Φ 1 MM	
OPERATING SYSTEM	SUPPORT WINDOWS, MAC, ANDROID, LINUX, CHORME	
ENVIRONMENT		
STORAGE & WORKING TEMPERATURE	WORKING TEMPERATURE: 0°C~45°C, STORAGE TEMPERATURE: 20°C~60°C	
STORAGE & WORKING HUMIDITY	10% ~ 90%	
PACKING PARAMETERS		
PHYSIC SIZE	1712.9*1030.9*89.15MM	1958.9*1169.75*89.15 MM
PLYWOOD CARTON SIZE	1785*1125*200MM	2040*1260*200 MM
NET WEIGHT	54+1 KG	69+1 KG
GROSS WEIGHT	69+1 KG	83.8+1 KG
ACCESSORIES		
REMOTE *1, POWER CABLE 1.8M*1, STYLUS PEN*2, WALL MOUNTED BRACKET*1		



DeltaView

PRESTIGIOUS CLIENTS



Stay Connected, Stay Inspired

Contact us

Head Office

Gurugram

Toll Free No

1800-571-7167

Sales Enquiries

sales@deltaview.in

Training & Support

enquiry@deltaview.in

www.deltaview.in