



TAKE A SMART APPROACH
TO EDUCATION WITH
DELTAVIEW SMART INTERACTIVE PANEL



www.deltaview.in

About us



SMARTER CLASSROOMS

Create a Brighter & Vibrant Learning Environment for Students & Teachers!

DeltaView interactive Panel is an ultimate solution designed to facilitate interactive learning. It offers multiple options to the teachers for enhancing the pedagogical outcomes which are directly correlated to the overall development of students. A solution that offers rugged performance in the classroom environment & easy to operate with the collaborative tools.

Product Specification



IPS Display



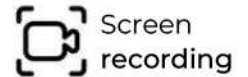
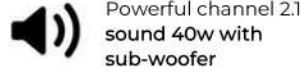
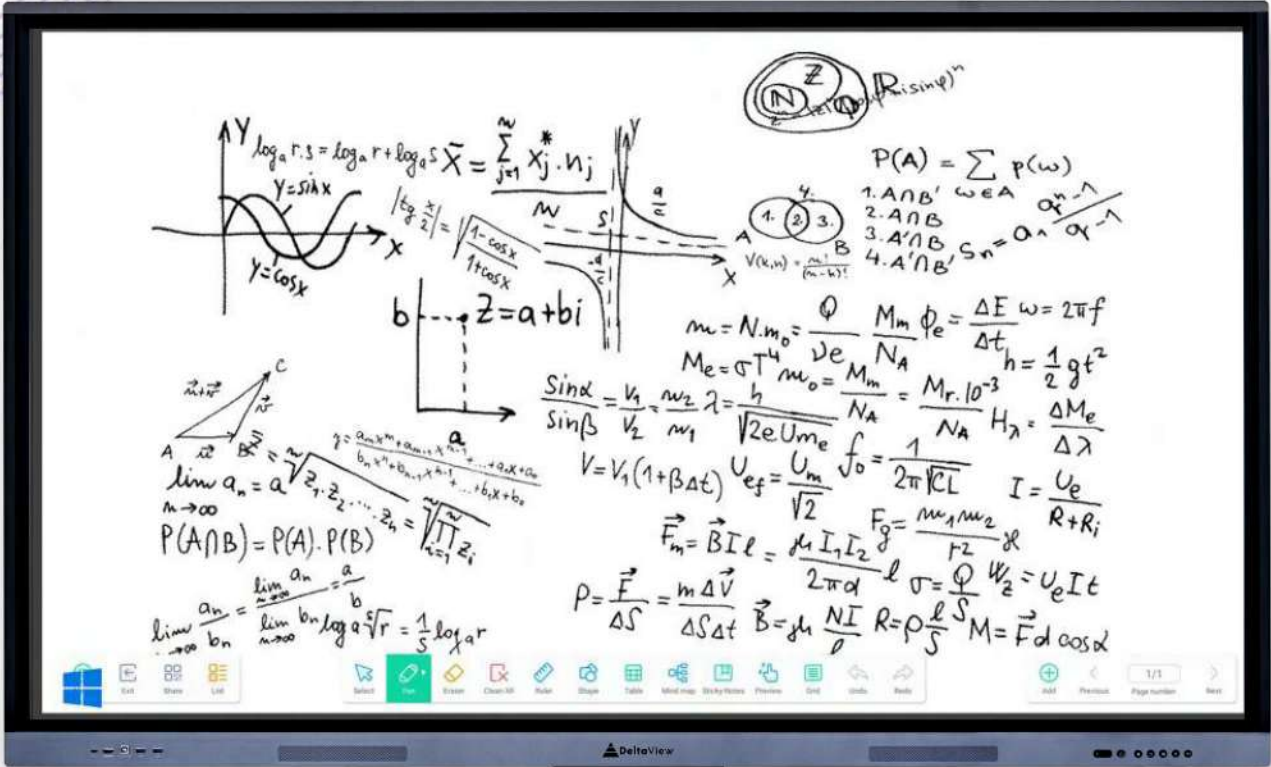
Anti-glare coating to absorb up to 80% of light



Split Screen



Pinch Zoom



Canvas giving sharp, natural writing experience



Anti-glare coating to absorb up to 80% of light



Easy Wireless connectivity with laptops and mobile devices



Open platform, compatible with all e-learning contents



Toughened glass protection 8 MOHS



In-built Wi-Fi 5, Ethernet & Bluetooth 5.1



Energy saving design, Max 300W, consumes <0.5W on standby



Wide viewing angle up-to 178 degree

Product Feature's

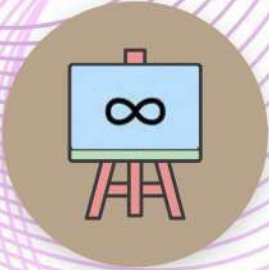
MULTI FINGURE GESTURE CONTROL

Draw, select, drag, rotate, and erase by using the 40 multi-point touch gesture control like palm erase, double click to change pen colour, long press, multi-finger swipe etc.



ENDLESS CANVAS / AUTO SCROLL

Write endlessly on the smart board without erasing. New pages are automatically created and old pages can be referred anytime during the session.



TEXT/SHAPE RECOGNITION

Recognizes the text or shape written or drawn on the canvas automatically and converts it into the most accurate and readable format.



SCREEN RECORDING

Teachers can record, save, replay, and share the entire lesson conducted on the smart digital screen with the audio and video files.



INTELLIGENT SEARCH

The panel automatically gives the access to online sources (like Google, Wikipedia, Youtube, PubMed) for the topic written and highlighted on the screen. And also share necessary information about topic direct on the canvas.



IMAGE INSERTION / PDF

Image insertaion it helps to insert a image through QR code from mobile to whiteboard.





Spark Specifications

MODEL NO. LED PARAMETERS	DV65S13 65"	DV75S13 75"	DV86S13 86"
DISPLAY			
BACK LIGHT	D-LED	D-LED	D-LED
ACTIVE DISPLAY AREA	1428.48(H) X 803.52(W)	1649.74(H) X 927.94(W)	1895.04(H) X 1065.96(W)
PANEL TYPE	IPS	IPS	IPS
RESOLUTION	3840 x 2160 (4K, RGB)	3840 x 2160 (4K, RGB)	3840 x 2160 (4K, RGB)
CONTRAST RATIO	1200:1	1200:1	1200:1
BRIGHTNESS	450 CD/M2	450 CD/M2	450 CD/M2
DISPLAY COLORS	1.07B (10 BIT)	1.07B (10 BIT)	1.07B (10 BIT)
ASPECT RATIO	16:9	16:9	16:9
RESPONSE TIME	2-5 MS	2-5 MS	2-5 MS
VIEWING ANGLE	178°(H) / 178°(W)	178°(H) / 178°(W)	178°(H) / 178°(W)
LED LIFE TIME	60,000 HRS	60,000 HRS	60,000 HRS
BONDING TECHNOLOGY	ZERO BONDING	ZERO BONDING	ZERO BONDING
SCREEN PROTECTOR	3MM TEMPERED AG GLASS/8 MOHS	3MM TEMPERED AG GLASS/8 MOHS	3MM TEMPERED AG GLASS/8 MOHS
SPEAKER			
SOUND OUTPUT-SPEAKER	20x2W SOUND BAR		
POWER PARAMETERS			
POWER (NO PC)	≤ 250 W	≤ 350 W	≤450 W
WORKING VOLTAGE	100V~240V AC	100V~240V AC	100V~240V AC
STANDBY POWER	<0.5W	< 0.5W	< 0.5W
ANDROID OS			
ANDROID SYSTEM	ANDROID 13		
MOTHERBOARD	T982		
RAM & ROM	DDR4 4GB & EMMC 64GB		
CPU / GPU	QUAD CORE, CORTEX A55, G52MP2		
WIFI	WIFI 5, 802.11AC/B/G/N/A/AX (2.4GHZ + 5GHZ) : WITH HOTSPOT 5GHZ		
BLUETOOTH	BLUETOOTH 5.1		
ETHERNET NETWORK	10M / 100M / 1000M (DEFAULT)		
INPUT & OUTPUT			
BACK INTERFACE INPUT & OUTPUT	USB 3.0*2, TOUCH USB*1, TYPE C*1, HDMI IN*2, USB 2.0*1, AUDIO IN *1, DP IN*1, VGA*1, RJ45 IN*1, RJ45 OUT*1, HDMI OUT*1		
FRONT CONNECTION	USB 3.0*2, HDMI IN*1 : TOUCH USB*1 : TYPE C*1		
TOUCH PARAMETERS			
TOUCH TECHNOLOGY	INFRARED TECHNOLOGY (IR)		
TOUCH POINTS	WINDOWS & ANDROID SYSTEM : 40 TOUCH POINTS		
INDUCTIVE OBJECTS	FINGER OR PEN		
ACURACY	φ 1 MM		
OPERATING SYSTEM	SUPPORT WINDOWS, MAC, ANDROID, LINUX, CHROME		
ENVIRONMENT			
STORAGE & WORKING TEMPERATURE	WORKING TEMPERATURE: 0°C~45°C, STORAGE TEMPERATURE: 20°C~60°C		
STORAGE & WORKING HUMIDITY	10% ~ 90%		
PACKING PARAMETERS			
PHYSICAL SIZE	1490.6*904.8*88.95MM	1712.9*1030.9*89.15MM	1958.9*1169.75*89.15MM
CARTON SIZE	1576*980*200MM	1785*1125*200MM	2040*1260*200MM
NET WEIGHT	42+1 KG	54+1 KG	69+1 KG
GROSS WEIGHT	56.5+1KG	69+1 KG	83.8+1 KG
ACCESSORIES			
REMOTE*1, POWER CABLE 1.8M*1, STYLUS PEN*2, WALL MOUNTED BRACKET*1			



DeltaView

PRESTIGIOUS CLIENTS



Stay Connected, Stay Inspired

Contact us

Head Office

Gurugram

Toll Free No

1800-571-7167

Sales Enquiries

sales@deltaview.in

Training & Support

enquiry@deltaview.in

www.deltaview.in