



TAKE A SMART APPROACH  
TO EDUCATION WITH  
**DELTAVIEW SMART INTERACTIVE PANEL**



[www.deltaview.in](http://www.deltaview.in)



About us



## SMARTER CLASSROOMS

**Create a Brighter & Vibrant Learning Environment for Students & Teachers!**

DeltaView interactive Panel is an ultimate solution designed to facilitate interactive learning. It offers multiple options to the teachers for enhancing the pedagogical outcomes which are directly correlated to the overall development of students. A solution that offers rugged performance in the classroom environment & easy to operate with the collaborative tools.

# Product Specification



IPS Display



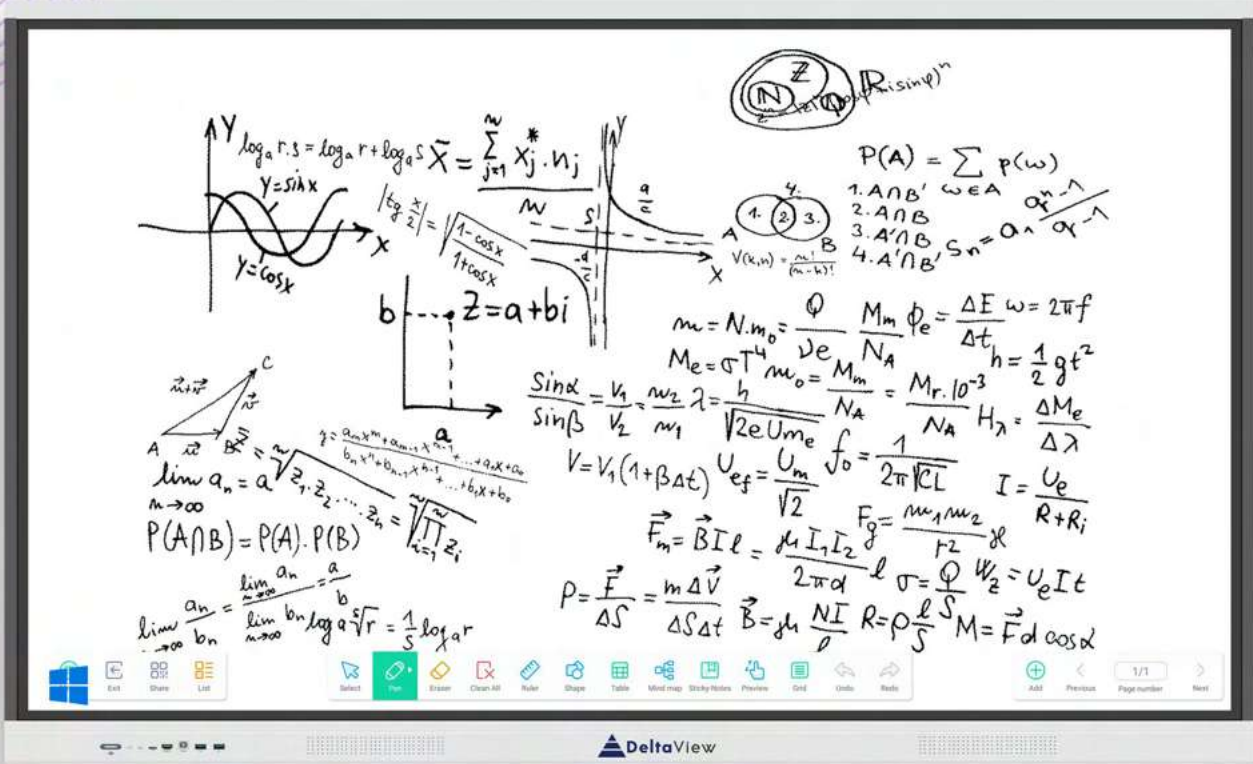
Anti-glare coating to absorb up to 80% of light



Split Screen



Pinch Zoom



Windows Support (OPT)



4K UHD



Powerful channel 2.1 sound 40w with sub-woofer



Screen recording



Canvas giving sharp, natural writing experience



Anti-glare coating to absorb up to 80% of light



Easy Wireless connectivity with laptops and mobile devices



Open platform, compatible with all e-learning contents



Toughened glass protection 8 MOHS



In-built Wi-Fi 6.0, Ethernet & Bluetooth 5.1



Energy saving design, Max 300W, consumes <0.5W on standby



Wide viewing angle up-to 178 degree



# Product Feature's

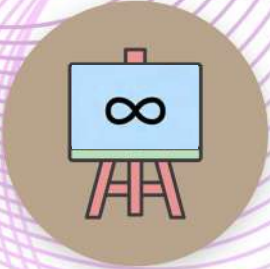
## **MULTI FINGURE GESTURE CONTROL**

Draw, select, drag, rotate, and erase by using the 40 multi-point touch gesture control like palm erase, double click to change pen colour, long press, multi-finger swipe etc.



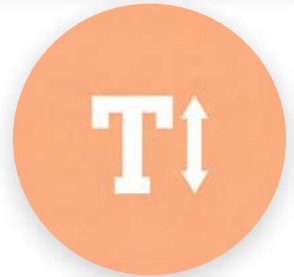
## **ENDLESS CANVAS / AUTO SCROLL**

Write endlessly on the smart board without erasing. New pages are automatically created and old pages can be referred anytime during the session.



## **TEXT/SHAPE RECOGNITION**

Recognizes the text or shape written or drawn on the canvas automatically and converts it into the most accurate and readable format.



## **SCREEN RECORDING**

Teachers can record, save, replay, and share the entire lesson conducted on the smart digital screen with the audio and video files.



## **INTELLIGENT SEARCH**

The panel automatically gives the access to online sources (like Google, Wikipedia, Youtube, PubMed) for the topic written and highlighted on the screen. And also share necessary information about topic direct on the canvas.



## **IMAGE INSERTION / PDF**

Image insertaion it helps to insert a image through QR code from mobile to whiteboard.



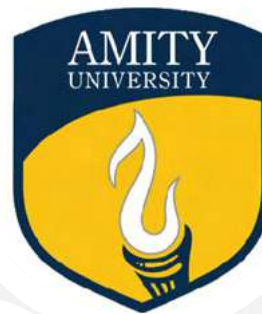


## Product Specifications

MODEL NO.	DV65A1	DV75A1	DV86A1
LED PARAMETERS	65"	75"	86"
<b>DISPLAY</b>			
BACK LIGHT	D-LED	D-LED	D-LED
ACTIVE DISPLAY AREA	1428.48 (H) X 803.52 (W)	1649.74 (H) X 927.94 (W)	1895.04 (H) X 1065.96 (W)
RESOLUTION	3840 x 2160 (PIXEL, RGB)	3840 x 2160 (PIXEL, RGB)	3840 x 2160 (PIXEL, RGB)
CONTRAST RATIO	1200:1	1200:1	1200:1
BRIGHTNESS	450 CD/M2	450 CD/M2	450 CD/M2
DISPLAY COLORS	1.07B (10 BIT)	1.07B (10 BIT)	1.07B (10 BIT)
ASPECT RATIO	16:9	16:9	16:9
RESPONSE TIME	3MS	3MS	3MS
VIEWING ANGLE	178° (H) / 178°(W)	178° (H) / 178°(W)	178° (H) / 178°(W)
LED LIFE TIME	50,000 HRS (MIN)	50,000 HRS (MIN)	50,000 HRS (MIN)
BONDING TECHNOLOGY	ZERO BONDING	ZERO BONDING	ZERO BONDING
SCREEN PROTECTOR	3MM TEMPERED AG GLASS / 8MOHS	3MM TEMPERED AG GLASS / 8MOHS	3MM TEMPERED AG GLASS / 8MOHS
<b>SPEAKER</b>			
SOUND OUTPUT-SPEAKER	40W		
<b>POWER PARAMETERS</b>			
POWER (NO PC)	≤250 W	≤350 W	≤450 W
WORKING VOLTAGE	100V~240V AC	100V~240V AC	100V~240V AC
STANDBY POWER	< 0.5W	< 0.5W	< 0.5W
<b>ANDROID OS</b>			
ANDROID SYSTEM	ANDROID 13		
MOTHERBOARD	T982		
RAM & ROM	DDR4 4GB & EMMC 64GB		
CPU / GPU	Cortex A55 quadcore		
WIFI	WIFI 5, 802. 11AC/B/G/N/A/AX (2.4GHZ + 5GHZ) : WITH HOTSPOT 5GHZ		
BLUETOOTH	BLUETOOTH 5.1		
UI RESOLUTION	4K UHD		
ETHERNET NETWORK	10M / 100M / 1000M (DEFAULT)		
<b>INPUT &amp; OUTPUT</b>			
BACK INTERFACE INPUT & OUTPUT	USB 3.0*2, TOUCH USB*1, TYPE C*1, HDMI IN*2, USB 2.0*1, AUDIO IN *1, DP IN*1, VGA*1, Rj45 IN*1, Rj45 OUT*1, HDMI OUT*1		
FRONT CONNECTION	USB 3.0*2, HDMI IN*1: TOUCH USB*1 : TYPE C*1		
<b>TOUCH PARAMETERS</b>			
TOUCH TECHNOLOGY	INFRARED TECHNOLOGY (IR)		
TOUCH POINTS	WINDOWS SYSTEM : 40 TOUCH : ANDROID SYSTEM : 40 TOUCH		
INDUCTIVE OBJECTS	FINGURE OR PEN		
ACURACY	Φ 1 MM		
OPERATING SYSTEM	SUPPORT WINDOW, MAC, ANDROID, LINUX, CHROME		
<b>ENVIRONMENT</b>			
STORAGE & WORKING TEMPERATURE	WORKING TEMPRATURE: 0C~45 C, STORAGE TEMPERATURE: 20 C~60 C		
STORAGE & WORKING HUMIDITY	10% ~ 90%		
<b>PACKING PARAMETERS</b>			
PHYSIC SIZE	1490.6*904.8*88.95MM	1712.9*1030.9*89.15MM	1958.9*1169.75*89.15 MM
PLYWOOD CARTON SIZE	1576*980*200MM	1785*1125*200MM	2040*1260*200 MM
NET WEIGHT	42+1 KG	54+1 KG	69+1 KG
GROSS WEIGHT	56.5+1 KG	69+1 KG	83.8+1 KG
<b>ACCESSORIES</b>			
REMOTE CONTROL*1, POWER CABLE 1.8M*1, STYLUS PEN*2, WALL MOUNTED BRACKET*1 HDMI CABLE / TOUCH CABLE			



## Our Prestigious Client



Stay Connected, Stay Inspired

**Toll Free No :**  
1800-571-7167

**Sales Enquiries:**  
[sales@deltaview.in](mailto:sales@deltaview.in)

**Branch Office :**  
Delhi | Lucknow | Jaipur

**Training & Support :**  
[support@deltaview.in](mailto:support@deltaview.in)

[www.deltaview.in](http://www.deltaview.in)